

---

# **BADEN POWELL TRAIL RESTORATION PROJECT REPORT— AUGUST 2020**

FUNDED BY GMR FOUNDATION, B.C. MOUNTAIN  
FOUNDATION AND B.C. MOUNTAINEERING CLUB

IN PARTNERSHIP WITH WEST VANCOUVER PARKS





# SHORTLY AFTER COMPLETION

Hikers enjoy the trail



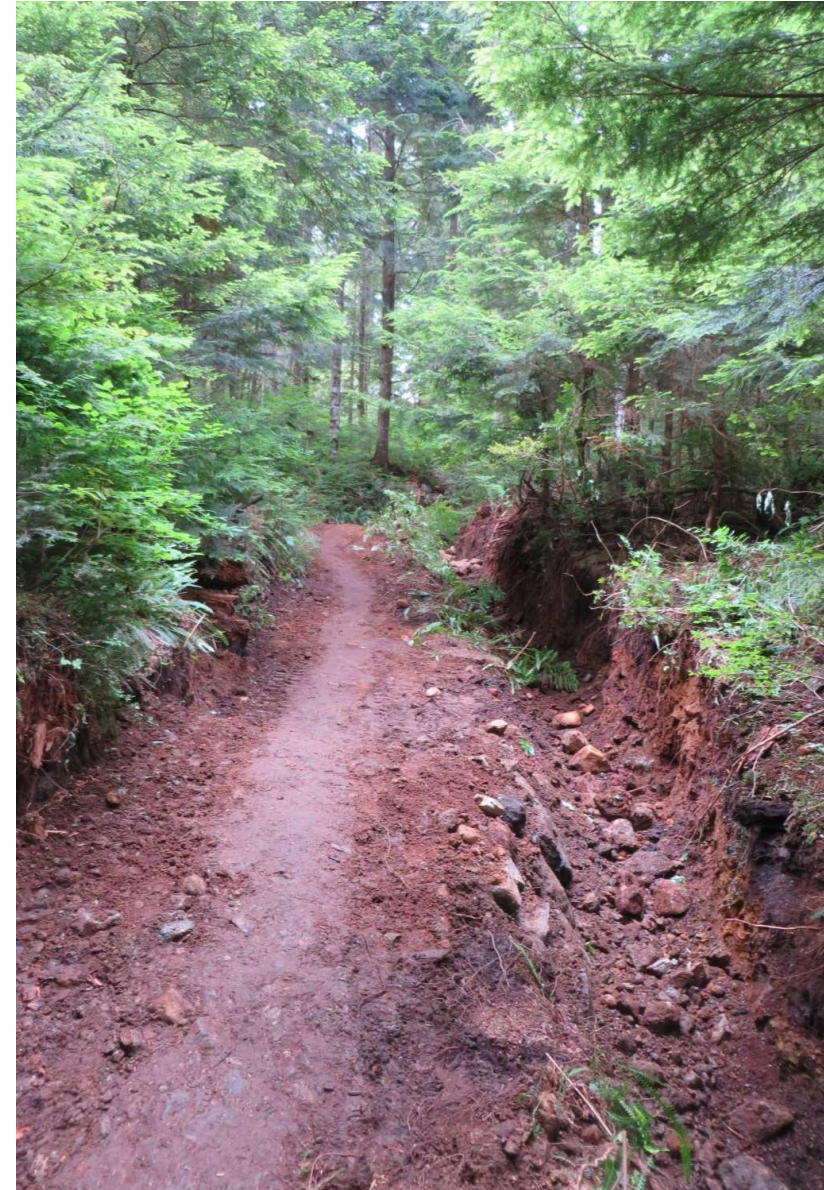
**BEFORE: TRAIL BRAIDING AROUND STEPS, CONSTANT EROSION FROM SEEPAGE AND WATER FLOWING DOWN TRAIL**



**AFTER: SHORT SWITCHBACKS REPLACE STEPS,  
DRAINAGE DITCH CHANNELS WATER FLOW**

---

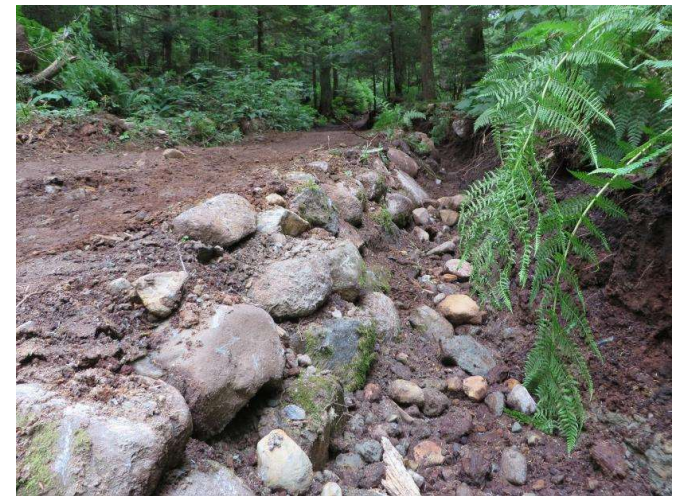
## TRAIL TREAD RESTORED





---

**STACKED BOULDERS  
LINE DITCH EDGES**





---

## **NEW DRAINAGE CHANNEL FOR HEAVY RUNOFF**





## **GENTLE SWALES ON THE TRAIL TREAD CHANNEL RUNOFF INTO DITCH**

Swales are intentionally constructed depressions in the trail surface that allow for the drainage of water across the trail surface.

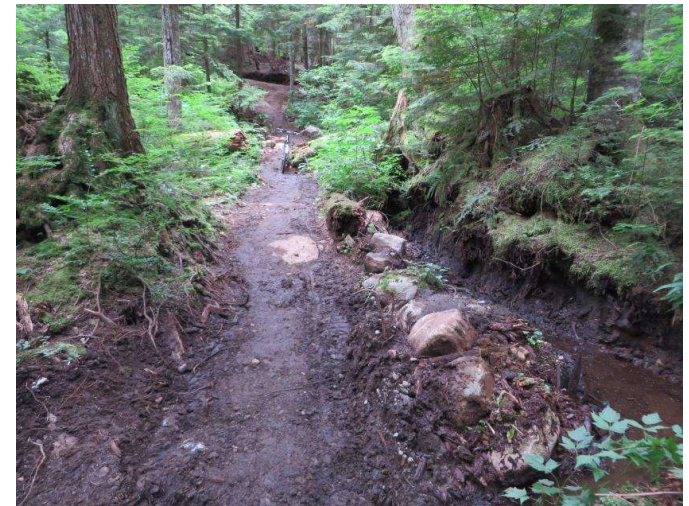






---

**CULVERT COVERED AND  
DIVERSION CHANNEL EXCAVATED  
TO HANDLE OVERFLOW DURING  
HIGH STREAM FLOW**





**HIKERS ASCEND THE RESTORED TRAIL**

A man wearing a dark jacket and a cap is operating a tracked excavator in a dense forest. The excavator is positioned on a dirt path, and its bucket is lowered towards the ground. The background is filled with tall trees and lush green foliage. The text "TRAIL CONTRACTOR JEREMY POWER ON DAY 2" is overlaid on the right side of the image in white, bold, sans-serif font.

**TRAIL  
CONTRACTOR  
JEREMY POWER  
ON DAY 2**



Staff visit the project site before work commences

**THANK YOU TO WEST VANCOUVER  
PARKS**

